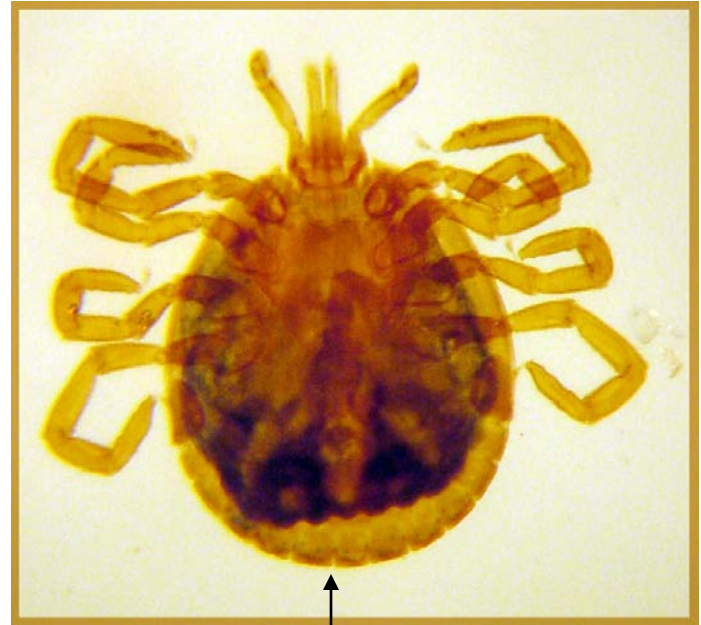
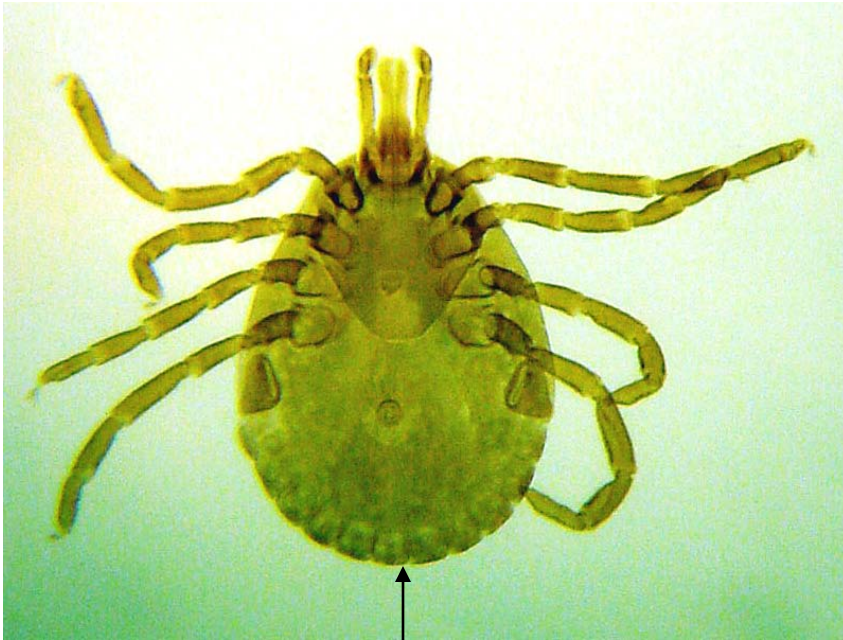


Amblyomma americanum: female (left); male (right).

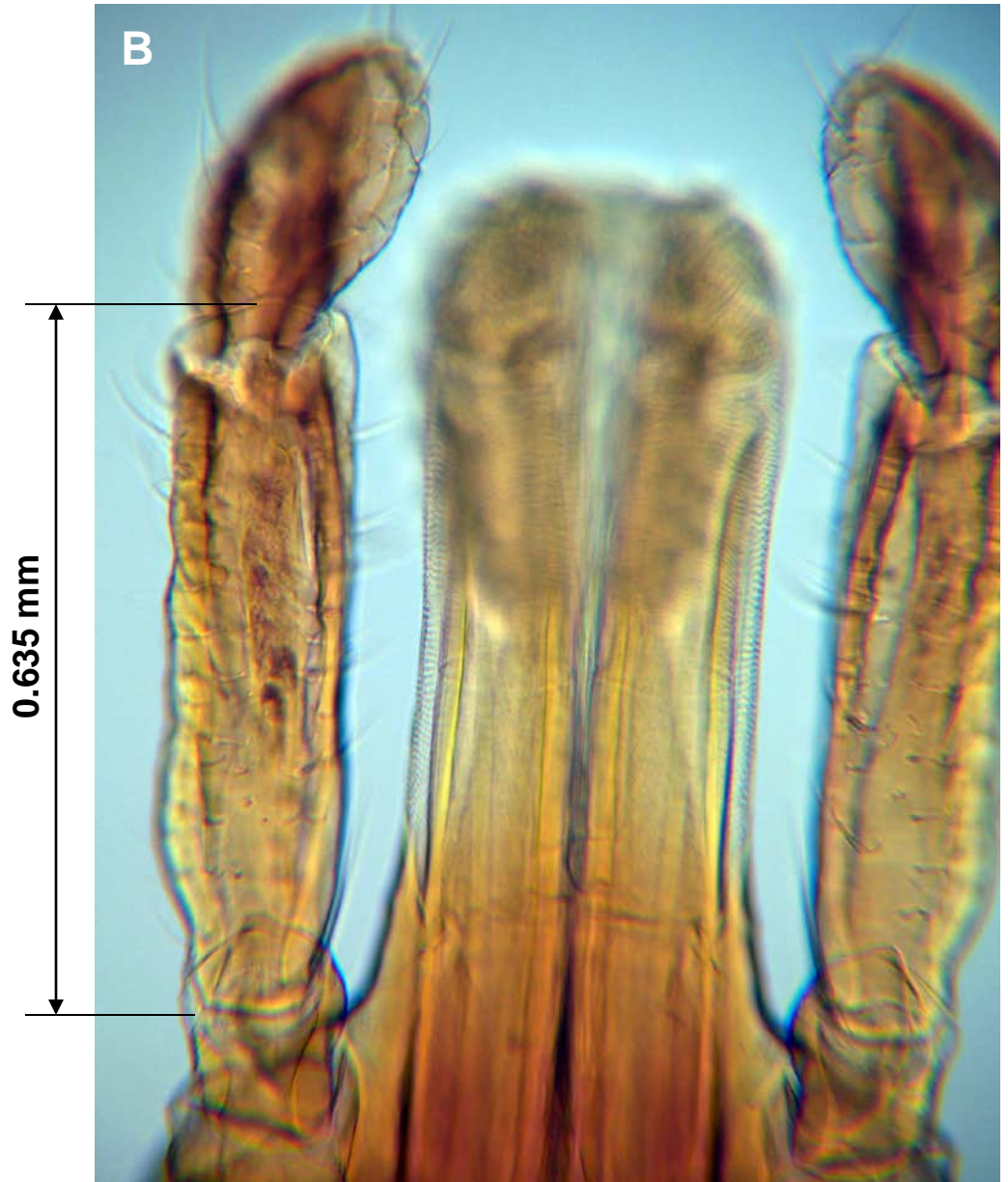
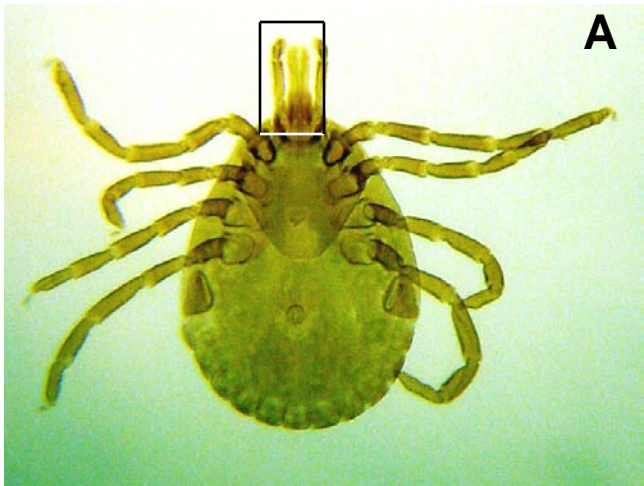


Note festoons.

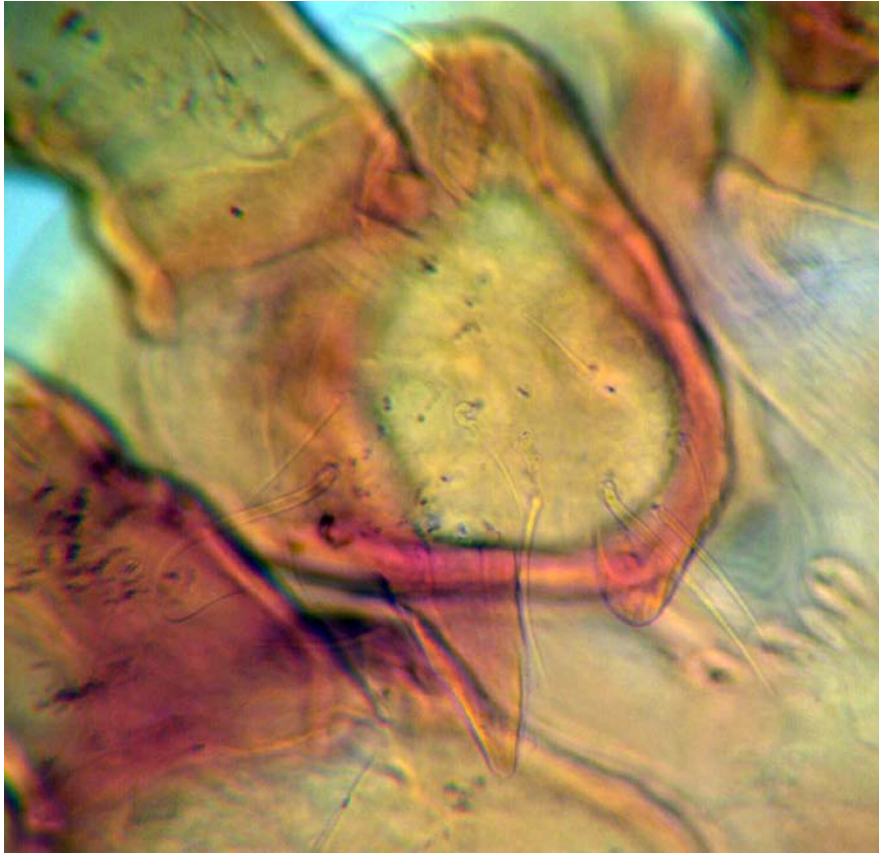
A. americanum: adult female (left); nymph (right).
Note size difference.



A. americanum, showing characteristic elongated 2nd palpal segment. Box in A, enlarged in B.

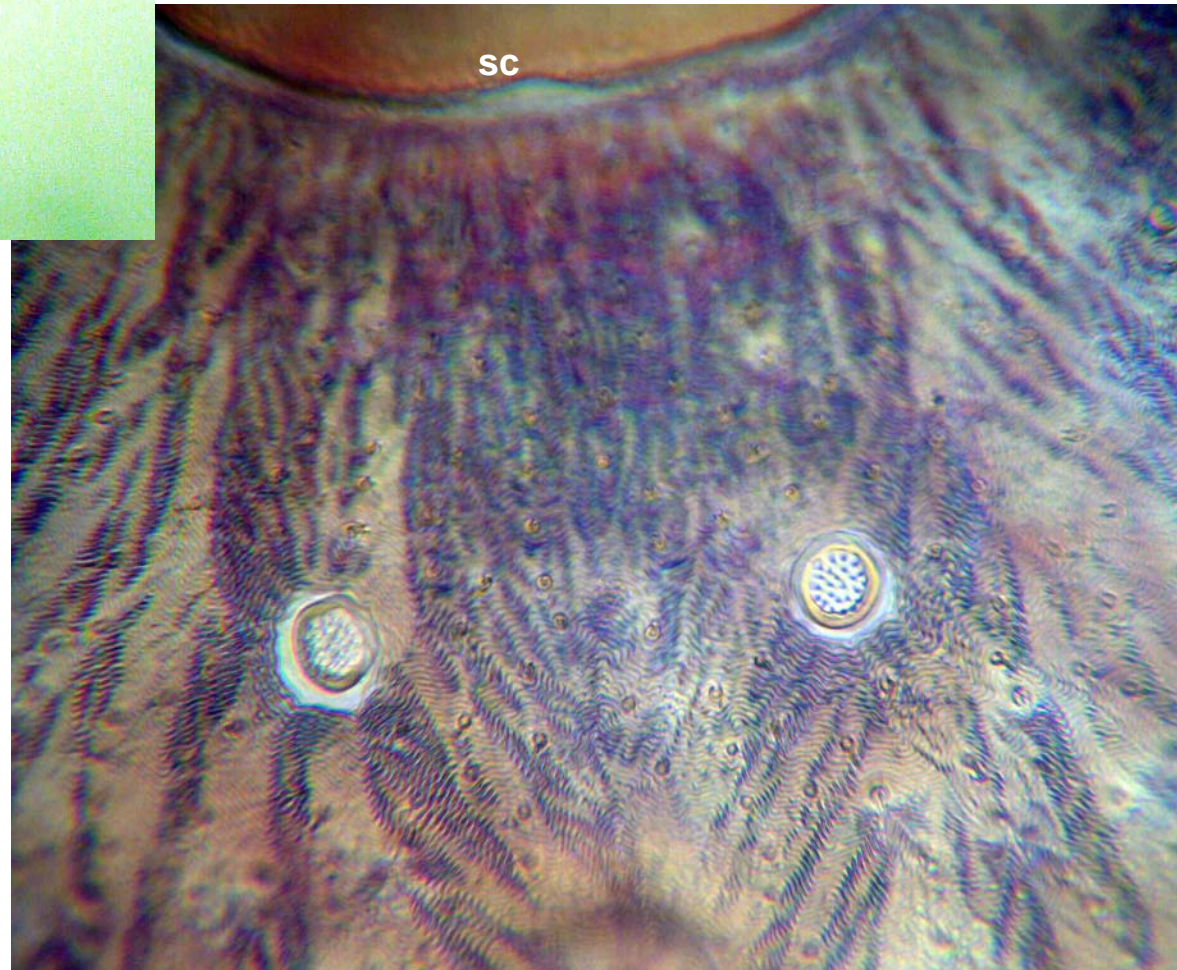
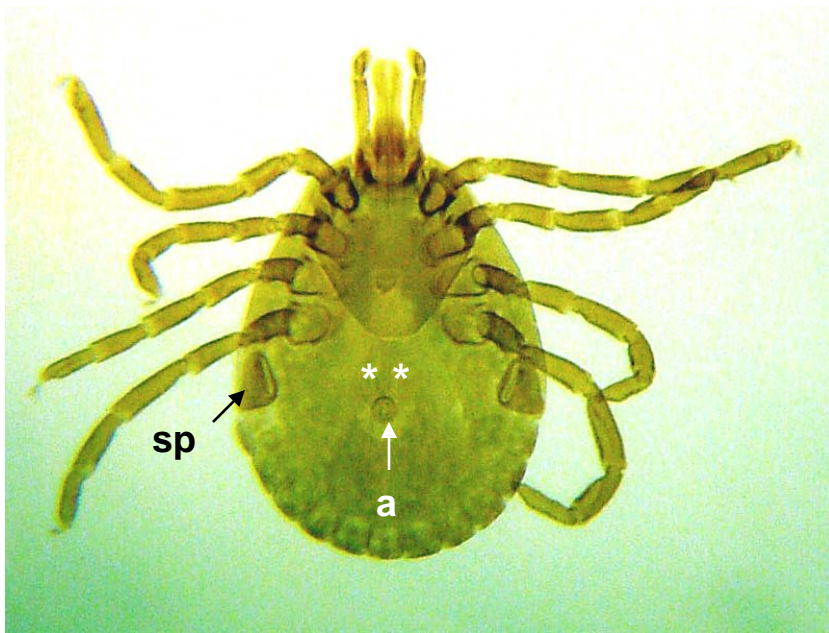


A. americanum: first coxal segment (coxa I) (left); distal portion of leg with claw and Haller's Organ (h) (right).

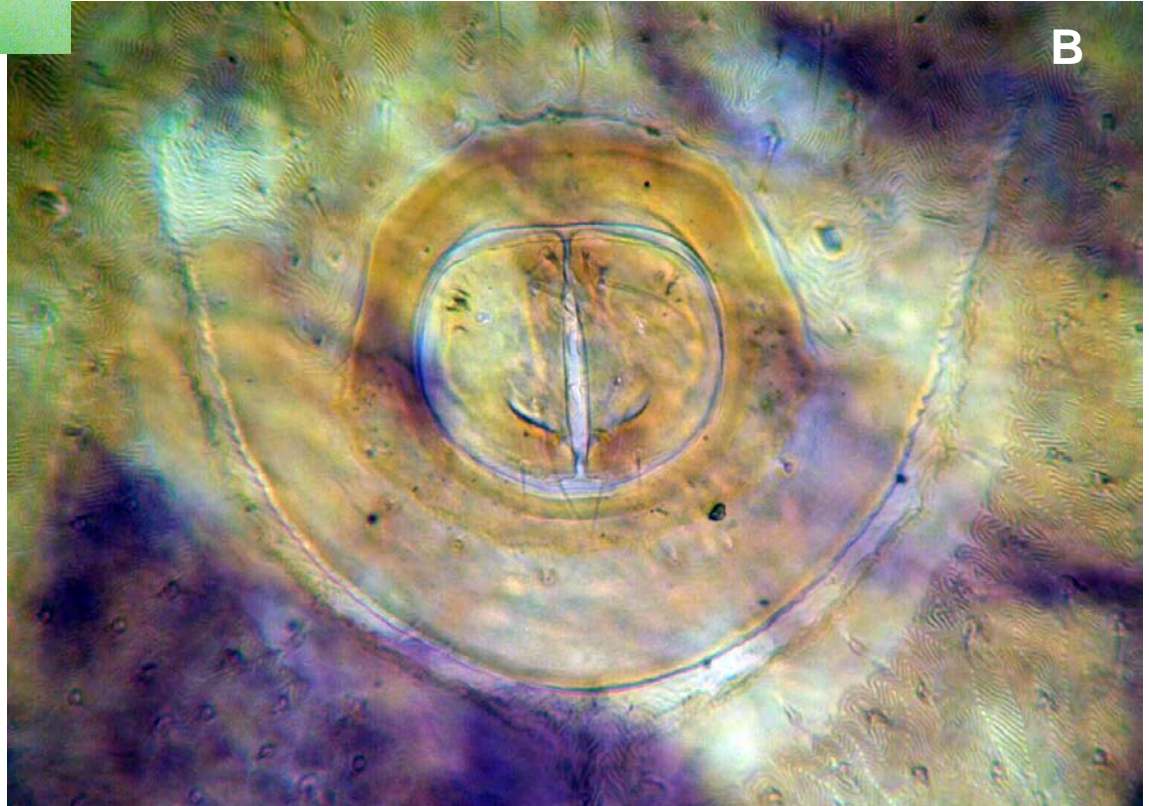


Dorsal sensory(?) structures lying posterior to scutum (between spiracles as shown by asterisks on adult to left).

Legend: a, anus; sc, scutum; sp, spiracle.



A. amblyomma: example of anal groove posterior to anus. Box in A, enlarged in B.





A. americanum: gonopore (arrow; enlarged below).

